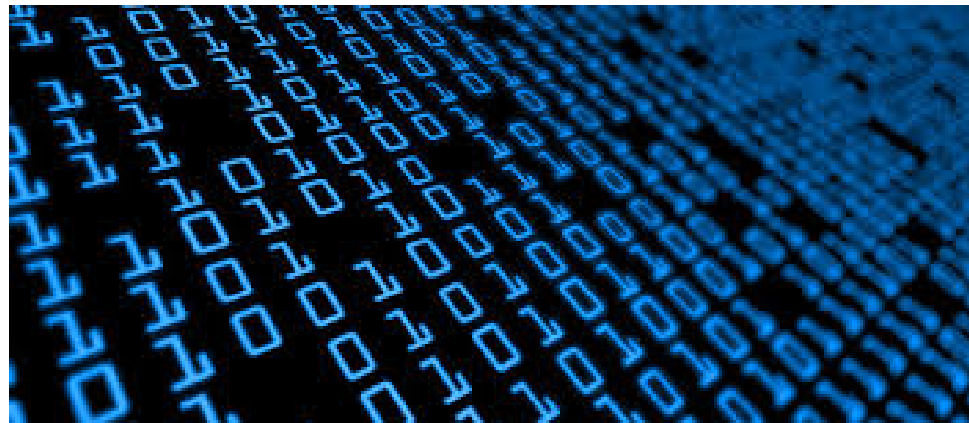
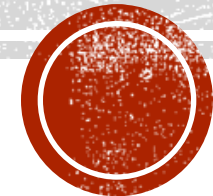


WP3 DATA FOR RAW MATERIALS INTELLIGENCE CAPACITY

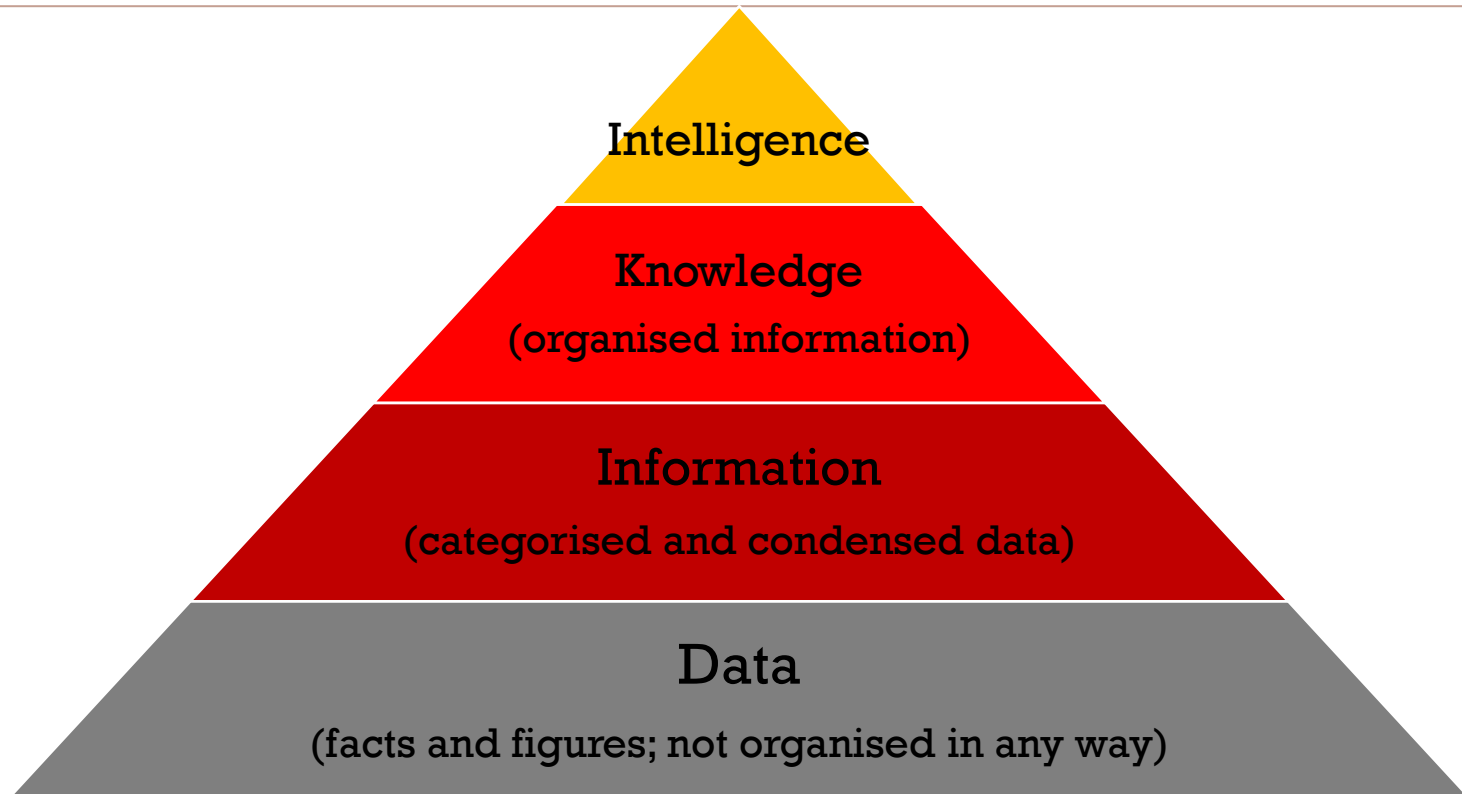


Evi Petavratzi and Teresa Brown
MICA kick-off meeting
03 Feb 2016



British
Geological Survey
NATURAL ENVIRONMENT RESEARCH COUNCIL

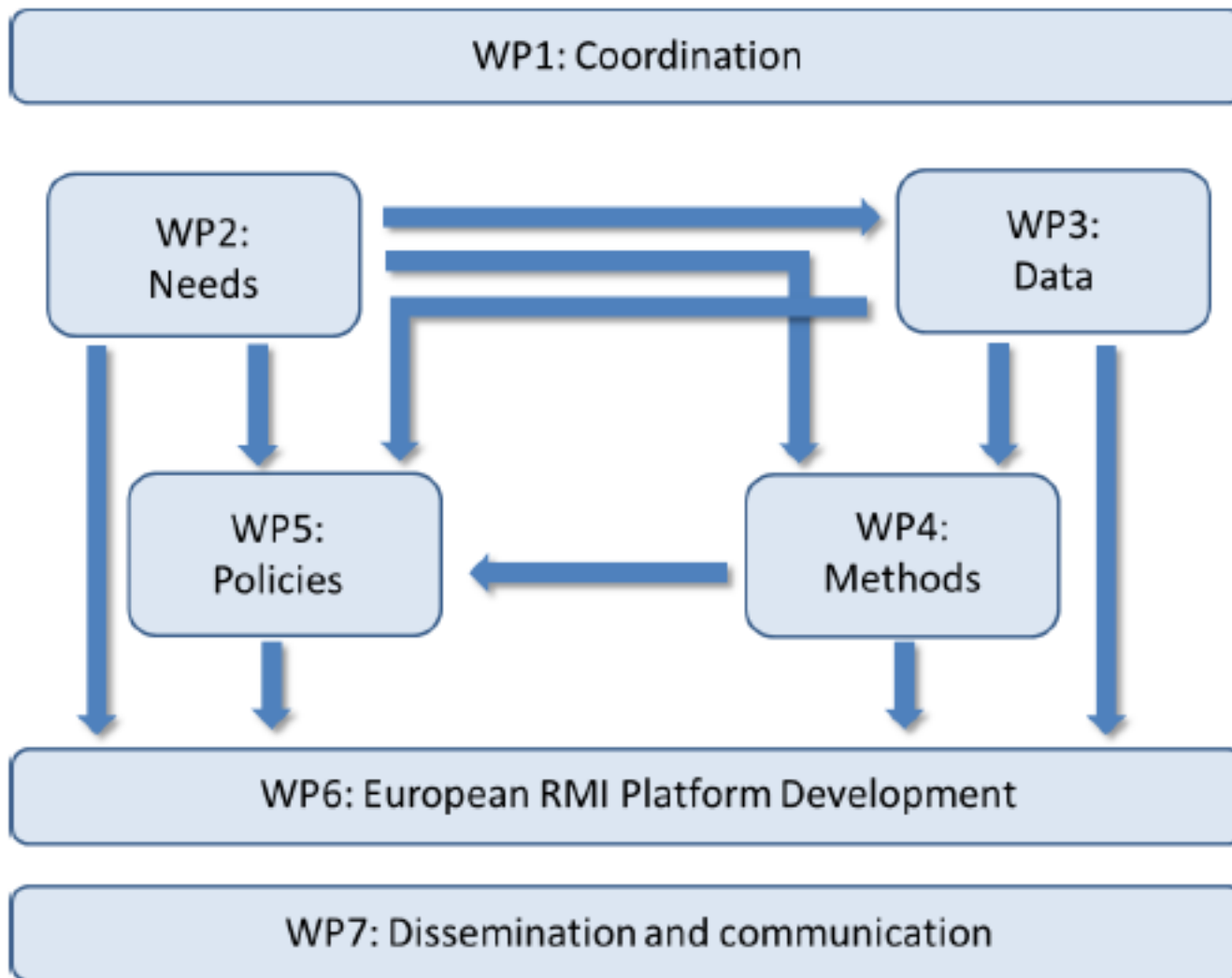
To review and assess datasets relevant to raw materials that will provide the evidence, information and knowledge required by stakeholders.



WP3 **does not generate new data**, but reviews existing ones with the scope to understand:

- How **datasets are being used** – for what purpose and by whom?
- How **existing datasets** and **combinations** of different datasets **could be used** to satisfy stakeholder needs?
- **What are we missing?** – gaps in raw material intelligence due to data gaps → areas for additional research focus
- How **certain** can we be that existing datasets can assist stakeholders in their decision making process?

- **Holistic data review** assessing availability, use and uncertainty
- Go beyond a simple review – **assessment of complex concepts and systems** i.e. matching datasets to stakeholder questions and linking data to various analytical tools and methods
- Exploring **data uncertainty** not just on the data itself (vagueness, ambiguity), but on decision making processes facilitated by data use
- Bringing together into a **single inventory different types of datasets** relevant in direct/indirect ways to raw materials



BGS (lead)

Minpol

NTNU

Linked third
parties

GTK

BRGM

GEUS

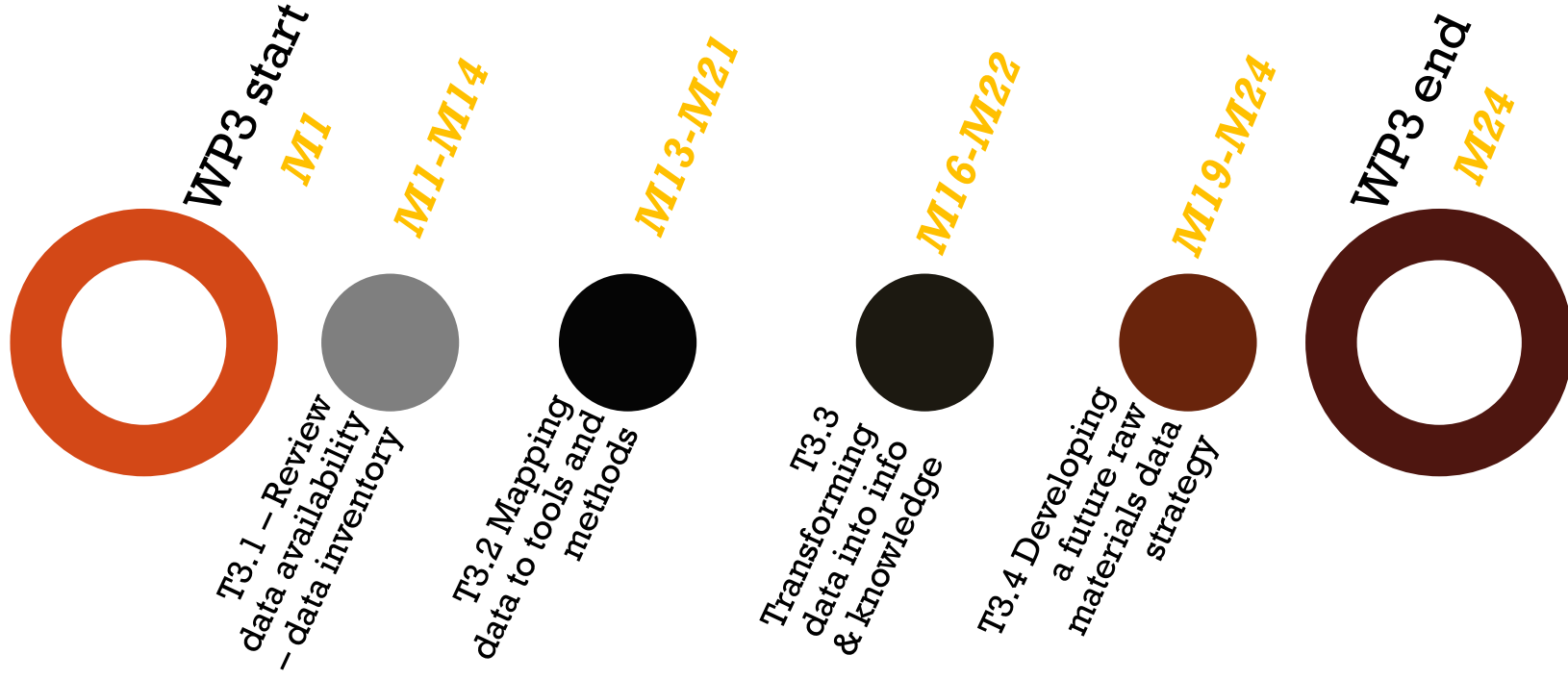
Fraunhofer ISI

BGR

UL-CML

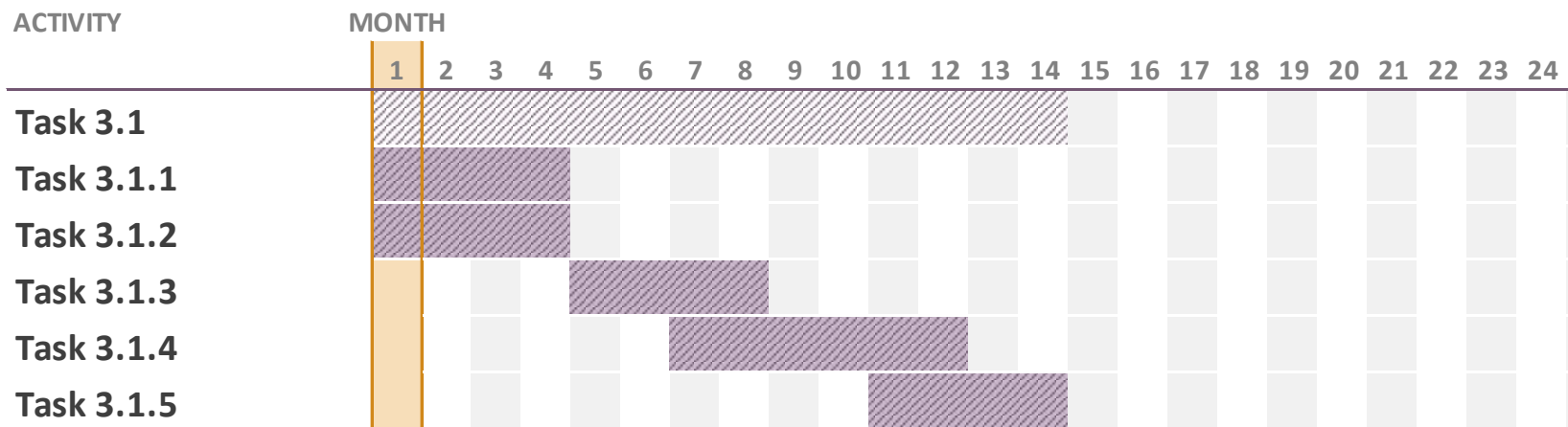
- Direct links with WP4, WP5 and WP6
- Input from WP2 on stakeholder requirements regarding data availability

WP3 TIMELINE



TASK 3.1—DATA AVAILABILITY

- Review data availability for primary and secondary RMs
- Categories/topics to start with as identified from WP3 kick-off workshop, then enhanced from WP2 input
- Consider EU data sources (primary focus), but international too
- Assess data usage, potential applications, uncertainty



- Consists of five sub-tasks

Task 3.1.1 Preliminary structure of data inventory

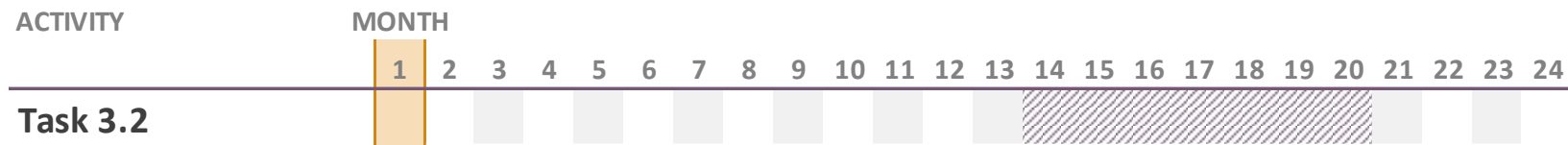
Task 3.1.2 Review existing datasets and data inventories

Task 3.1.3 Review additional datasets

Task 3.1.4 Quality assurance of the raw materials inventory.

Task 3.1.5 Case studies on data uncertainty

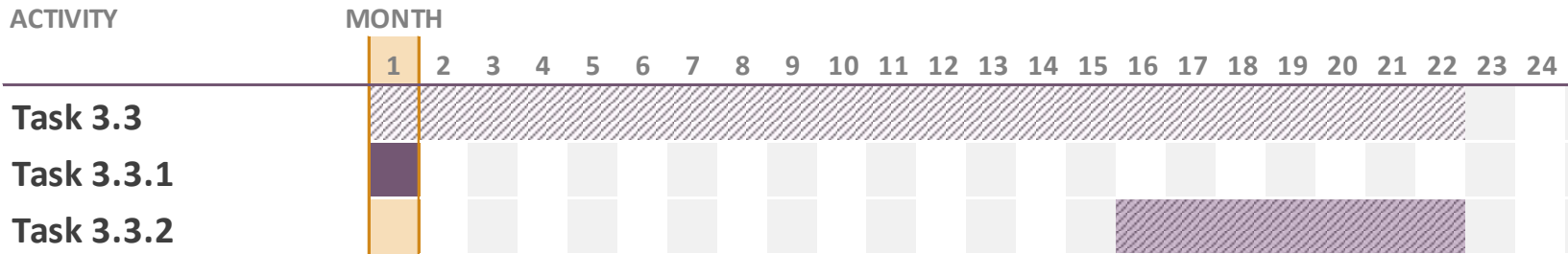
- Close collaboration with WP4
- Map datasets to appropriate tools, methods, calculations
- Where multiple datasets are available, then prioritisation of datasets that best fit the purposes of tools/ methods/ calculations
- Identify data gaps
- Produce final data inventory



Team: UL-CML lead, BGS, NTNU

TASK 3.3—TRANSFORMING DATA INTO KNOWLEDGE

- Determine how datasets are used and what information/ knowledge they may convey
- Complementary to WP2, but WP3 uses the knowledge of experts within the consortium to identify emerging issues and topics of interest to stakeholders



Team: BGS/ BRGM lead, F-ISI

TASK 3.3—TRANSFORMING DATA INTO KNOWLEDGE

- Consists of two sub-tasks

Task 3.3.1 Consortium expert knowledge

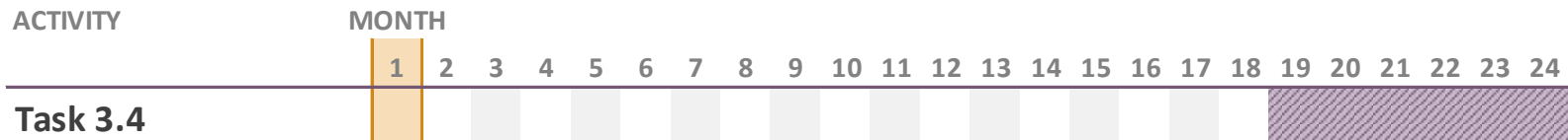
- WP3 workshop at kick-off meeting
- Short survey circulated to partners to identify emerging issues and topics of interest

Task 3.3.2 Workshop on data for mineral intelligence

- How are data used by stakeholders to aid decision making and what is the associated data uncertainty?
- Focused workshop with selected stakeholders

TASK 3.4—RAW MATERIAL DATA STRATEGY

- Development of data strategy based on findings of T3.1-T3.3, WP2 (stakeholder needs) and recommendations from WP4 and WP5
- Issues to be discussed in the strategy: data acquisition, accessibility, data gaps etc



Team: BGS lead, Minpol, UL-CML

Del. No	Title	Type Dissemination level	Due Date (month)
D3.1	Draft data inventory	Public report	14
D3.1	Final data inventory	Public report	20
D3.2	Report on transformation of data into information	Public report	22
D3.4	Raw material data strategy and report on data inventory	Public report	24



MICA Mineral Intelligence
Capacity Analysis



Co-funded by
the European Union

THANK YOU FOR YOUR ATTENTION

Please do not forget to complete the short WP3 survey:
<https://www.surveymonkey.co.uk/r/W697LJK>

Evi Petavratzi & Teresa Brown
BGS-NERC
evpeta@bgs.ac.uk tbrown@bgs.ac.uk